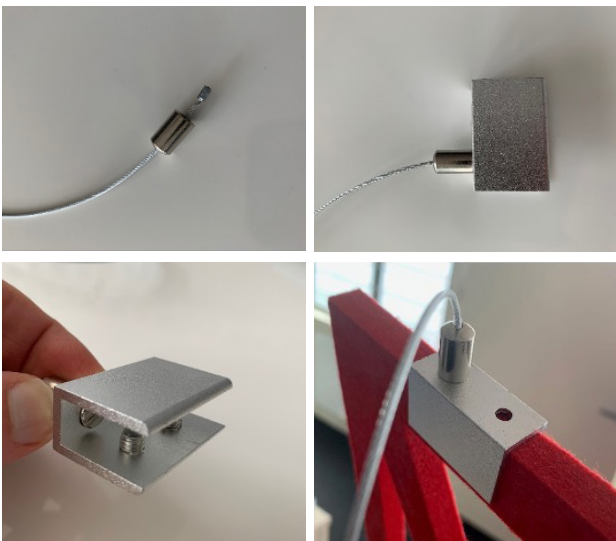


## Hanging Carved Panels Installation Instructions

**1.** Attach the panel clamp to the top of the panel as shown. Tighten the screws on the side of the clamp to grip the panel and then insert a screw from the top of the clamp into the panel surface.



**2.** Repeat installation on the other side of the Carved Panel, ensuring the clamps are equal distance from the corners.

**3.** Install the ceiling mount into the ceiling based on the same width your as the clamps you have attached to the panels. This will ensure the wires hang straight.

**4.** Feed the wire through the ceiling cap and through the gap in the side of the ceiling mount, pulling the wire through to the approximate length you need. Screw the ceiling cap into the ceiling mount. Adjust the length of the wires to ensure the panel sits level. Cut the wire to length.



**5.** Repeat at the bottom of the panel into the floor if required.

