

Jabra Evolve 30

More than a headset, a workplace evolution

Evolve 30 is a professional headset designed to help you focus and improve your conversations.

Stay connected, using either USB or jack

Connect to your PC via USB or use the 3.5 mm jack for connectivity to your personal device - such as a smartphone or tablet - to work or listen to music wherever you may be.

Easy call management

In-line call controller with large buttons and LED indicators, making handling of calls and music easy. Pick up or end calls, control volume, or simply mute the line.

Plug-and-play setup

Works out of the box with all leading Unified Communications platforms. Installation is as easy as simply plugging it in.



Works with softphone, tablet and smartphone

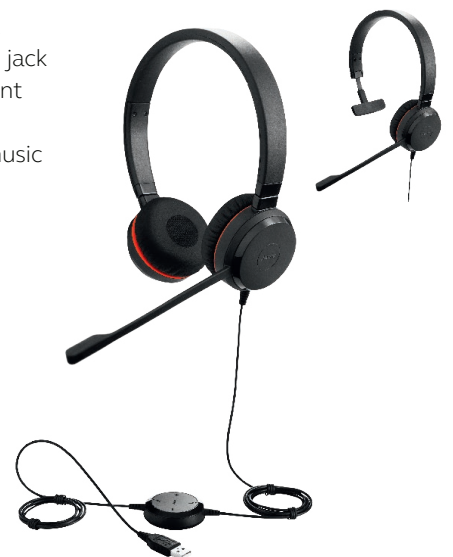
Certified:



Reasons to choose

Jabra Evolve 30

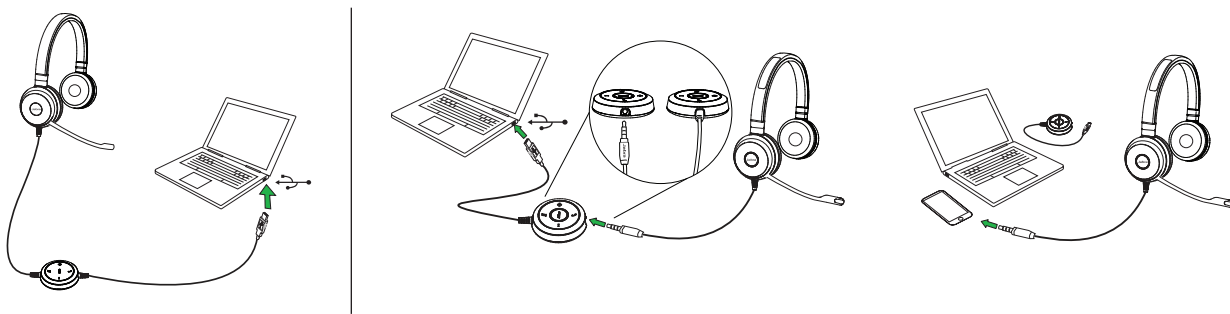
- Works with all smart devices using 3.5mm jack
- Easy call management using control unit
- Made for calls and music



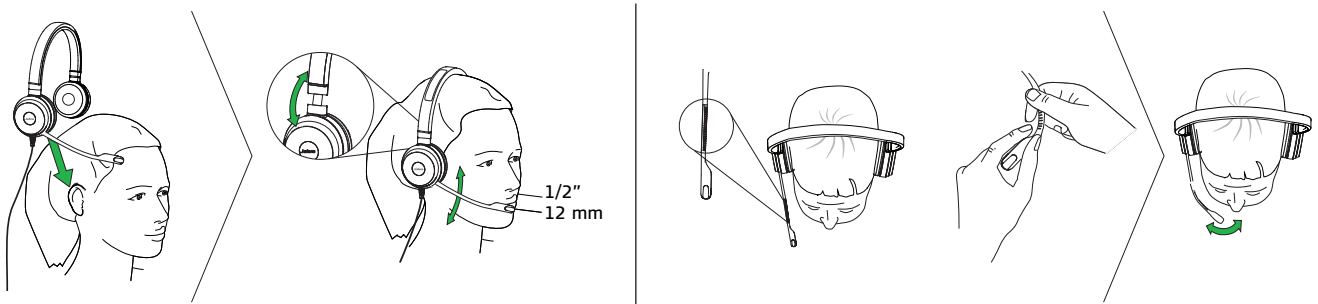
Connectivity options



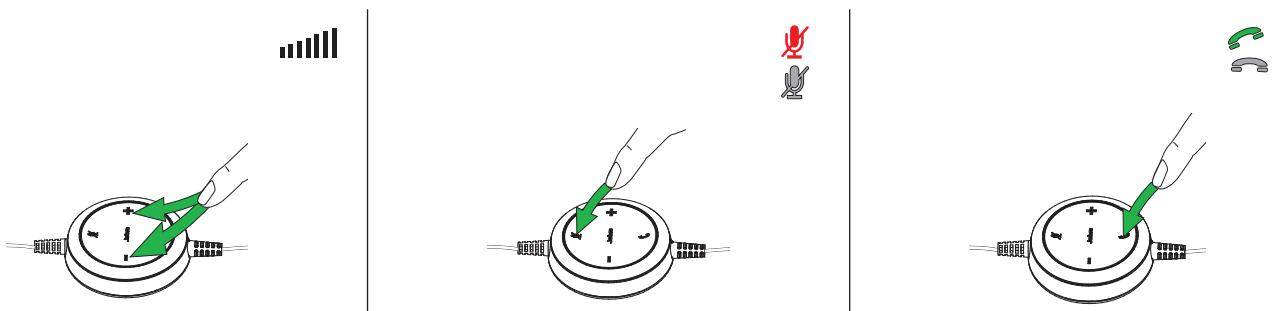
01 How to connect





02 How to wear



03 How to use



Available variants	Variant name	Description	Detail
 Mono  Duo	Jabra Evolve 30 II UC mono Item: 5393-829-309	Corded mono headset for VoIP softphone and smartphone	<ul style="list-style-type: none"> Optimized for Unified Communication with USB adapter that enables easy integration with your PC. 3.5 mm jack integrated into the control unit allows you to easily connect your headset to your PC, smartphone and tablet. Leatherette ear cushions. Soft pouch included.
	Jabra Evolve 30 II UC stereo Item: 5399-829-309	Corded duo headset for VoIP softphone and smartphone	
	Jabra Evolve 30 II MS mono Item: 5393-823-309	Certified for Skype for Business mono headset for VoIP softphone and smartphone	
	Jabra Evolve 30 II MS stereo Item: 5399-823-309	Certified for Skype for Business duo headset for VoIP softphone and smartphone	