

INSTALLATION INFORMATION

Pod™ Petite

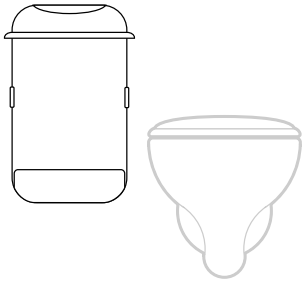
Pod™ Petite manual

Pod™ Petite auto

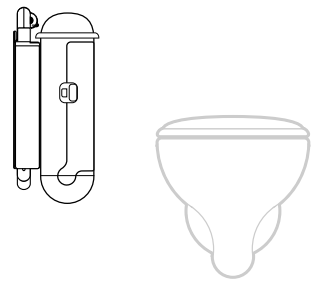
Recommended specifications

Recommended specifications

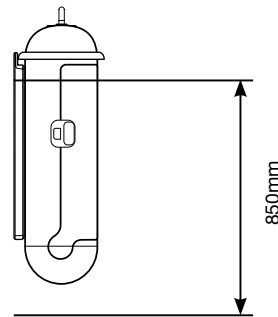
Important:



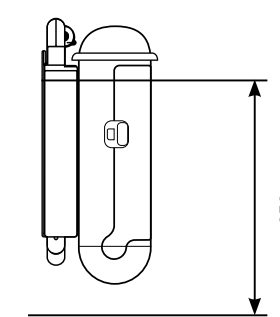
Back wall installation



Side wall installation



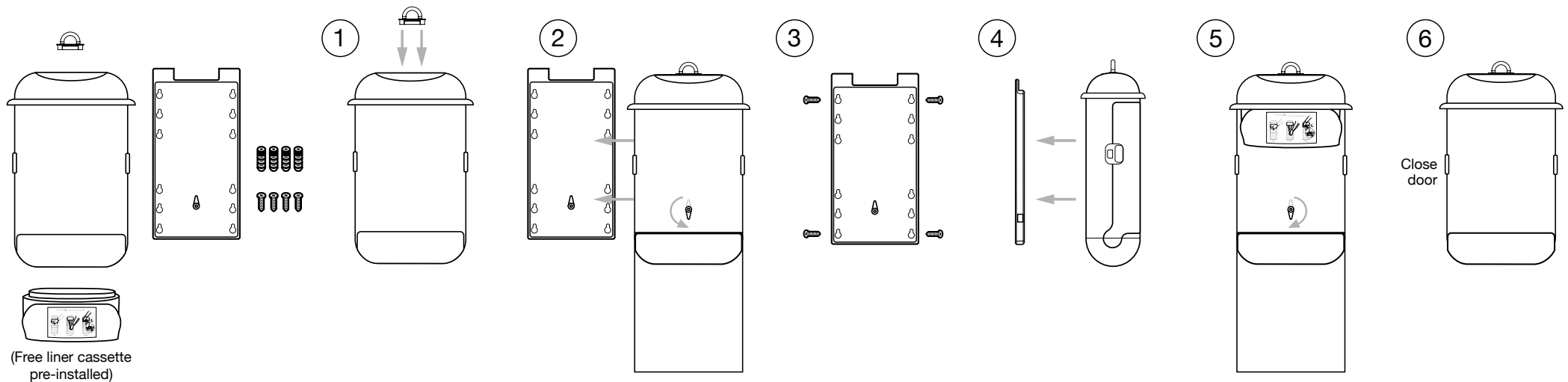
850mm



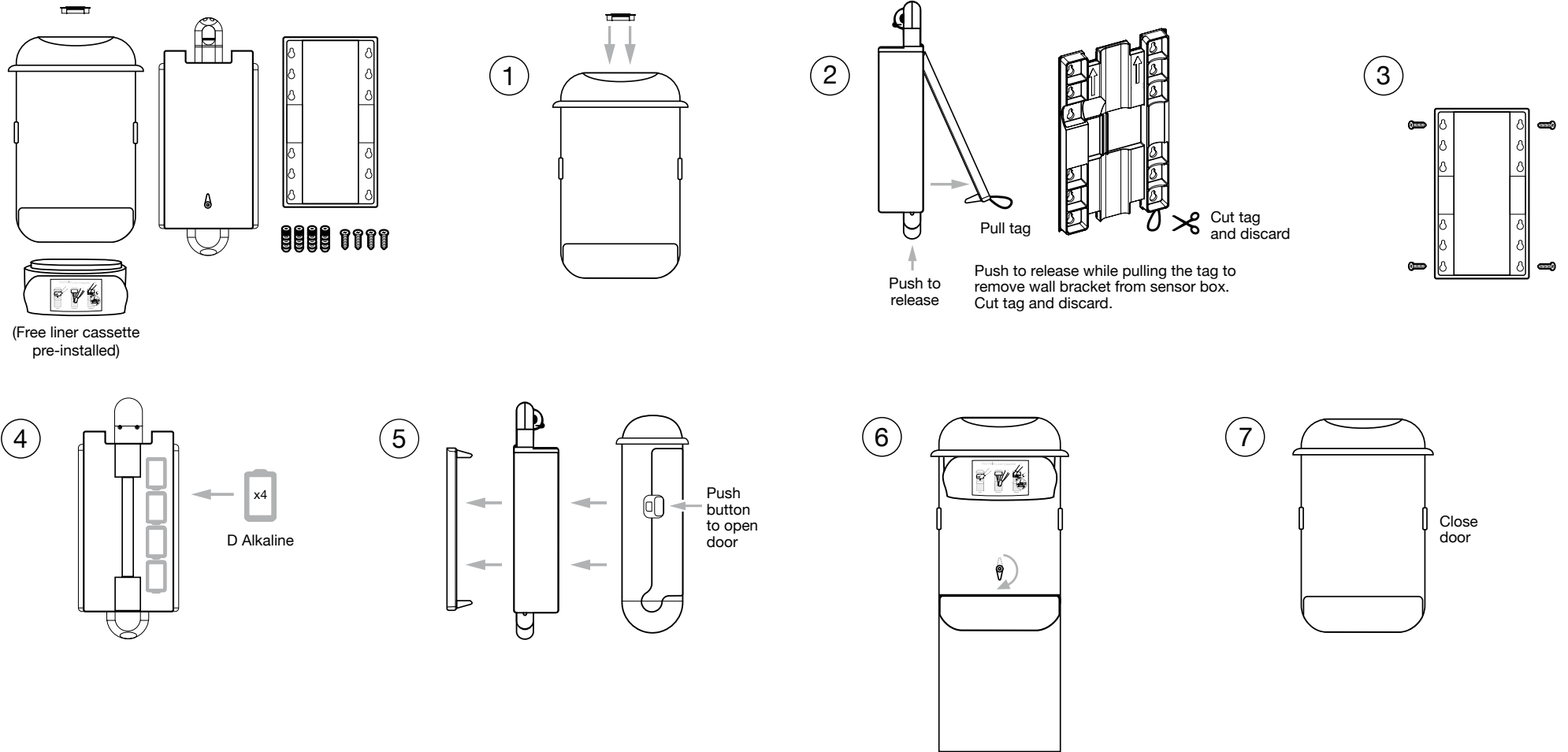
850mm

Wall bracket/sensor box wall plate should be positioned at a height of approximately 850mm above floor for best results. Secure into a wall stud. Use wall anchors if a wall stud cannot be located.

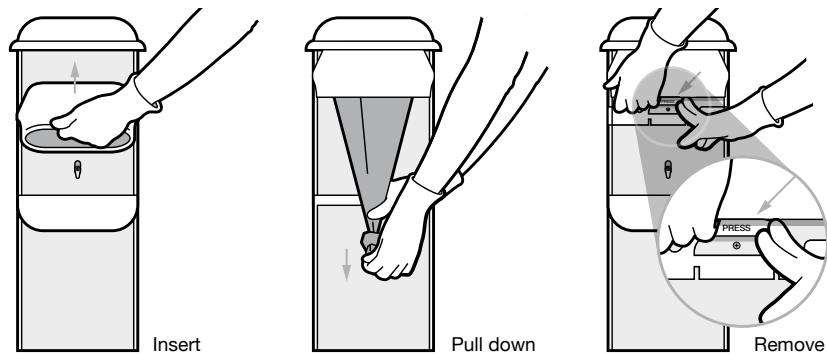
POD™ PETITE MANUAL - INSTALLATION INSTRUCTIONS



POD™ PETITE AUTO - INSTALLATION INSTRUCTIONS



POD™ PETITE LINER CASSETTE - INSTRUCTIONS



www.sanipod.com

For installation videos and support visit
<http://www.sanipod.com/tools-and-support/>